



## *Travelling along the supply chain*

*Brussels, Jan 8th, 2020*

*Best practice example of a more transparent and sustainable supply chain*





Revenues in excess of **1 billion** euros



About **3,800** employees



**60** countries  
**5** continents



**11** brands



**7** plants



**7** fishing vessels



CARDINAL



# Become the most sustainable and responsible tuna company FOR the world





We believe that, being market leader, **it is our responsibility** to become a point of reference in our industry when it comes to **tuna sustainability**.

It is a complex topic therefore we work on it following a global, scientific, multistakeholder approach to face it



**BOLTON**  
FOOD



CARDINAL





# OUR COMMITMENTS ON TRACEABILITY AND TRANSPARENCY

ISSF FOUNDING MEMBERS

WWF AGREEMENT

SUPPORTING CERTIFICATIONS:

ISO 22.005

MSC

APR



CARDINAL





MORE THAN 25 RESOLUTIONS!



FAD  
not entangling fad



Limiting fish capacity  
only source from large scale purse seiner vessels already active or under construction at 31/12/2013.

Proactive Vessel Register  
only source from large scale seiner vessels registered on the PVR



CARDINAL





- 1) **100%** of our procurement coming from **MSC or ASC certified fisheries** or from Robust Fishery Improvement Projects (**FIPs**) and Aquaculture Improvement Projects (**AIPs**) by 2024.
- 2) Guarantee full **transparency and traceability** to our consumers.
- 3) Strengthen our **policy on Human Rights** along the entire supply chain.
- 4) Support the **protection of the marine ecosystem and biodiversity**
- 5) Promote a **positive change in the market** and communicate to **raise awareness among consumers**



CARDINAL



# AS OF JULY 2019, 65.5% OF BOLTON TUNA IS SOURCED FROM ROBUST FIPs AND MSC CERTIFIED FISHERIES



©2018 Bolton Group



**WWF**

WORKING  
TOGETHER  
FOR  
SUSTAINABLE  
FISHERIES



# 65.5%

- 19% from MSC certified fisheries
- 46.5% from Robust FIPs



Robust FIP  
Eastern  
Pacific Ocean  
TUNACONS<sup>1</sup>

Robust FIP  
Weastern and  
Central  
Pacific Ocean  
OPAGAC<sup>2</sup>

Robust FIP  
Eastern  
Pacific Ocean  
OPAGAC<sup>2</sup>

Robust FIP  
Atlantic Ocean  
OPAGAC<sup>2</sup>

Robust FIP  
Indian Ocean  
SIOTI<sup>3</sup>

Robust FIP  
Indian Ocean  
OPAGAC<sup>2</sup>

Robust FIP  
INDONESIA

MSC Certified  
Fishery  
SOLOMON  
ISLANDS<sup>4</sup>

1. through our strategic partner Tri Marine
2. through our own company Grupo Conservas Garavilla
3. through our supplier Princes Ltd.
4. through our strategic partner Tri Marine





Guarantee full transparency and traceability to our consumers.



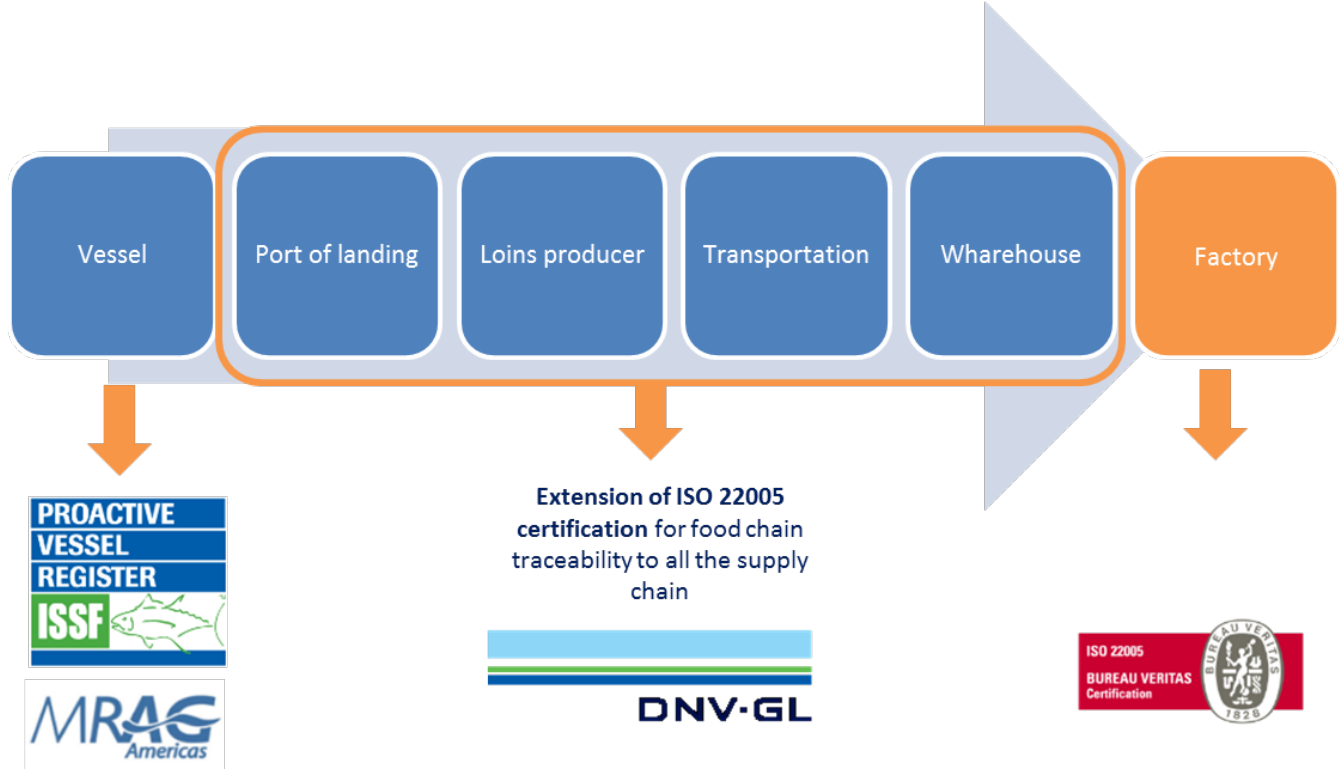
CARDINAL





We are the first tuna company in the world with all its supply chain **ISO 22005 certified**

- Vessel
- PVR member
- IMO Number
- Ocean of catch
- FAO Area
- Fishing date
- Fishing method
- Tuna size
- Production date
- Quality assurance datas



CARDINAL





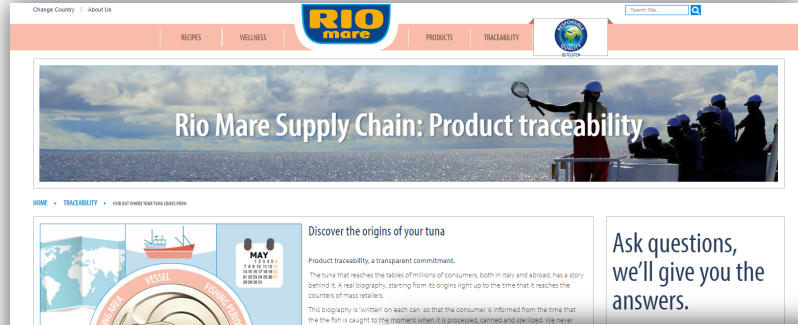
2008	EC REG. 1005/2008 - IUU
2009	Definition of FISH LOT Bolton start collecting tuna fishing data from suppliers – Excel form
2010	Bolton tuna managing: FISHLOT-based approach
2011	Tuna fishing data collected by PDF form to fill in
2013	Supplier Portal implementation project
2015	Supplier Portal on-line
2017	Integration between Portal - Plant Traceability System (Cermenate Plant)
2018	Automatization fishing data on packaging



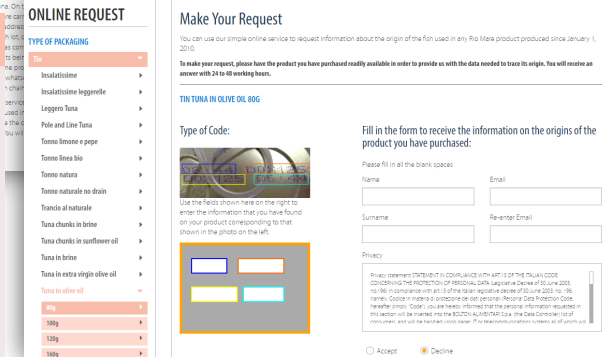
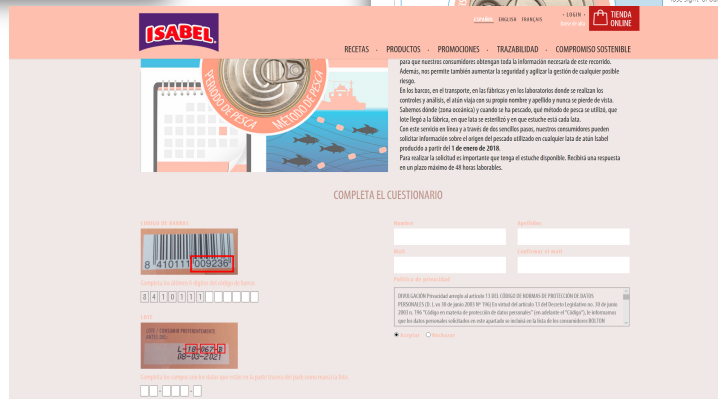
CARDINAL



## Consumer can access to all the traceability information through the packaging or the traceability request page on Rio Mare and Isabel website

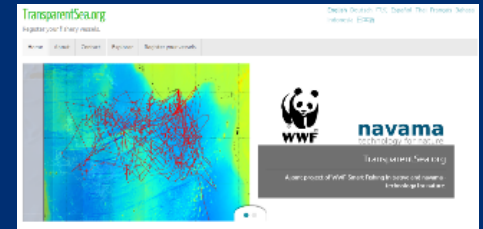


- Production date
- Ocean of Catch
- FAO Area
- Fishing Method





- TRACEABILITY**
- We endorse the **Tuna 2020** traceability declaration
  - We participate in the **Global Dialogue on Seafood Traceability**
  - Our owned vessels are enlisted on **transparentsea.org**



CARDINAL





Strengthen our policy on Human Rights along the entire supply chain.



CARDINAL





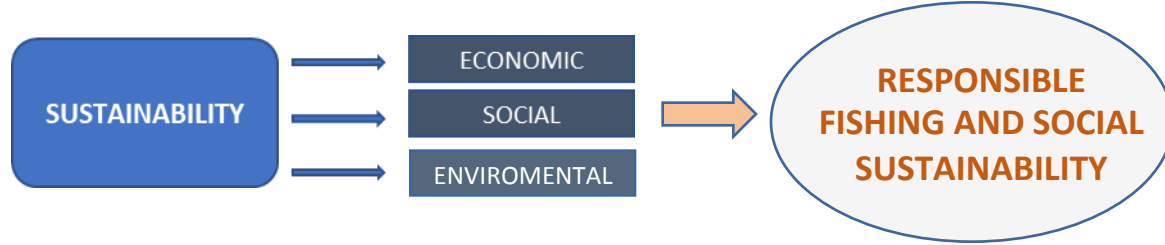
## The policies we have adopted for human rights management along the supply chain are:

- Bolton Group Code of Ethics
- Bolton Group Human Rights Policy and Bolton Human Rights Check List for internal audits (benchmarked with the Monterrey Framework)
- Bolton Food Tuna Policy
- Vessels Code of Conduct





# TUNA FROM RESPONSIBLE FISHING CERTIFICATION



## 5 PRINCIPLES

1. SAFETY AT SEA
2. MONITORING AND CONTROL
3. BEST GOOD PRACTICES
4. SANITARY STANDARDS
5. SOCIAL AND LABOUR CONDITIONS



CARDINAL







- Bolton Food has a **strategic and comprehensive approach to sustainability** with a **scientific approach**, partnering with the most **expert and credible stakeholders**
- **It is** a never ending journey that we are facing with the ambition of remaining a model for the industry.
- Traceability in Bolton Food is **best-in-class** and it as a **fundamental tool** to guarantee not only the products' quality and safety, but also sustainability.



CARDINAL





**Thank you**

*Visit our website [www.boltongroup.net](http://www.boltongroup.net)*