

# PAS 1550:2017 Flow Diagrams

## Contents

*Click on the page numbers to go to that section*

- 2 Vessel ID
- 3 Authorisations and Licenses
- 4 VMS and AIS
- 5 Landing and Port Controls
- 6 Traceability
- 7 Transshipment
- 8 Labour Risk Assessment
- 9 Further Information



**SEAFOOD ETHICS  
ACTION ALLIANCE**

This publication has been produced with the financial contribution of the European Union.  
Its contents are the sole responsibility of WWF and EJF and do not necessarily reflect the views of the EU.

# PAS 1550 - Vessel ID

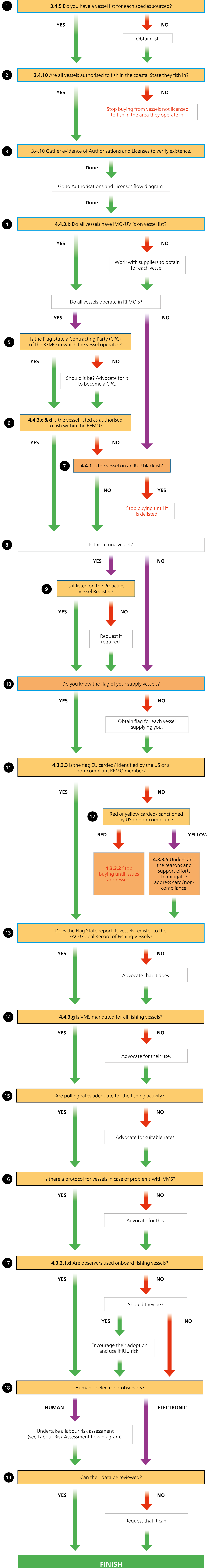
Don't know answer: If you don't know the answer to a question, you should launch a formal investigation or seek expert help to answer it if possible.

## Legend

[Back to Contents Page](#)

- Risk assessment consideration
- Required
- Aligns with GDST  
(KDEs collected in line with the GDST standard will assist with the step in the flow diagrams).
- Condition satisfied. Proceed.
- Condition not satisfied. Action required.
- Proceed in line with risk assessment

Page 2



# PAS 1550 - Authorisations and Licenses

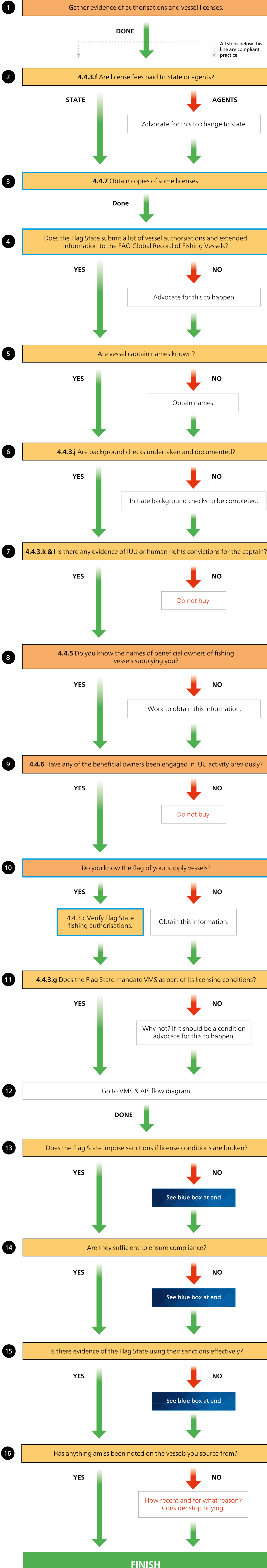
Don't know answer: If you don't know the answer to a question, you should launch a formal investigation or seek expert help to answer it if possible.

## Legend

[Back to Contents Page](#)

- Risk assessment consideration
- Required
- Aligns with GDST  
(KDEs collected in line with the GDST standard will assist with the step in the flow diagrams).
- Condition satisfied. Proceed.
- Condition not satisfied. Action required.
- Proceed in line with risk assessment

Page 3



At each stage when an element of policy is either not mandated for, or is insufficiently implemented for it to have any positive impact to reduce IUU, consider you and/or your supply chain advocating for this to happen.



# PAS 1550 - VMS and AIS

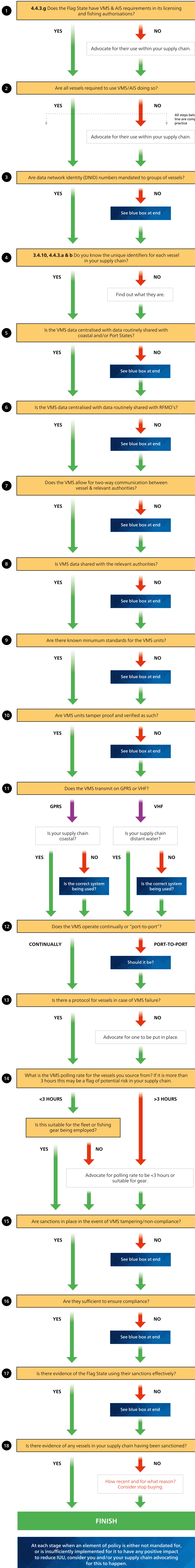
Don't know answer: If you don't know the answer to a question, you should launch a formal investigation or seek expert help to answer it if possible.

## Legend

[Back to Contents Page](#)

- Risk assessment consideration
- Required
- Aligns with GDST  
(KDEs collected in line with the GDST standard will assist with the step in the flow diagrams).
- Condition satisfied. Proceed.
- Condition not satisfied. Action required.
- Proceed in line with risk assessment

Page 4





# PAS 1550 - Landing and Port Controls

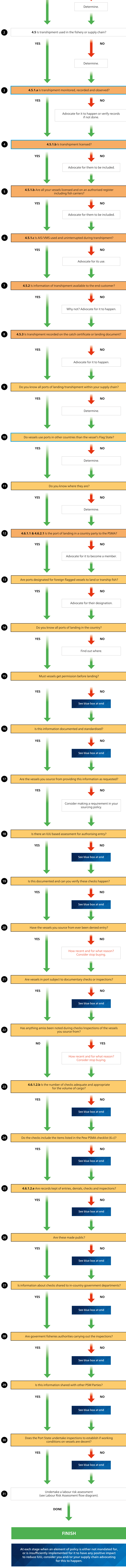
Don't know answer: If you don't know the answer to a question, you should launch a formal investigation or seek expert help to answer it if possible.

## Legend

[Back to Contents Page](#)

- Risk assessment consideration
- Required
- Aligns with GDST  
(KDEs collected in line with the GDST standard will assist with the step in the flow diagrams).
- Condition satisfied. Proceed.
- Condition not satisfied. Action required.
- Proceed in line with risk assessment

Page 5



At each stage when an element of policy is either not mandated for, or is insufficiently implemented for it to have any positive impact to reduce IUU, consider you and/or your supply chain advocating for this to happen.



# PAS 1550 - Traceability

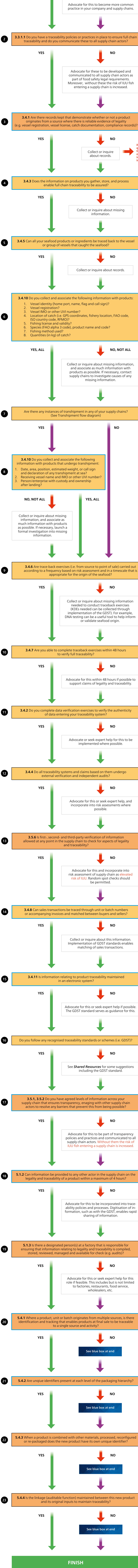
Don't know answer: If you don't know the answer to a question, you should launch a formal investigation or seek expert help to answer it if possible.

## Legend

◀ Back to Contents Page

- Risk assessment consideration
- Required
- Aligns with GDST  
(KDEs collected in line with the GDST standard will assist with the step in the flow diagrams).
- Condition satisfied. Proceed.
- Condition not satisfied. Action required.
- Proceed in line with risk assessment

Page 6





# PAS 1550 - Transshipment

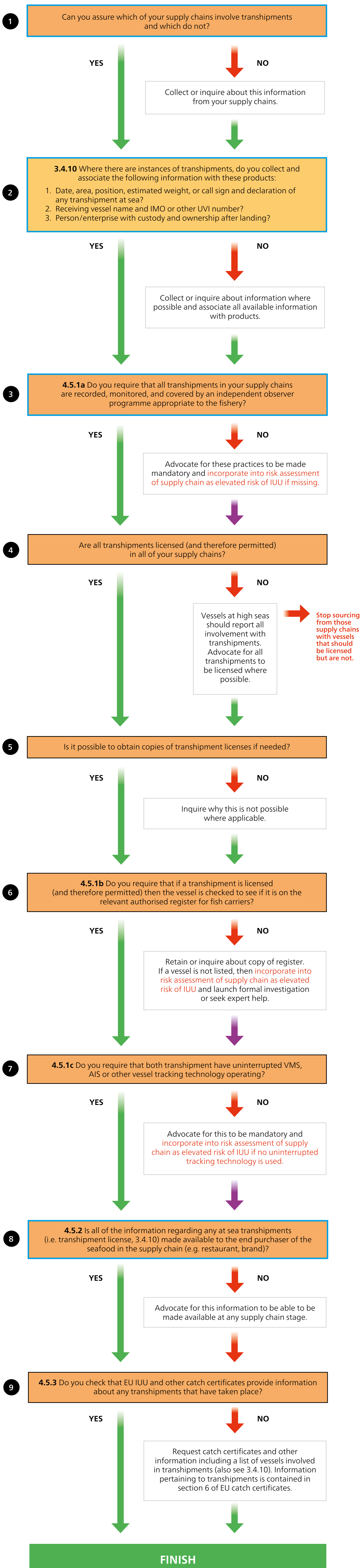
**Don't know answer:** If you don't know the answer to a question, you should launch a formal investigation or seek expert help to answer it if possible.

## Legend

[Back to Contents Page](#)

- Risk assessment consideration
- Required
- Aligns with GDST  
(KDEs collected in line with the GDST standard will assist with the step in the flow diagrams).
- Condition satisfied. Proceed.
- Condition not satisfied. Action required.
- Proceed in line with risk assessment

Page 7



# PAS 1550 - Labour Risk Assessment

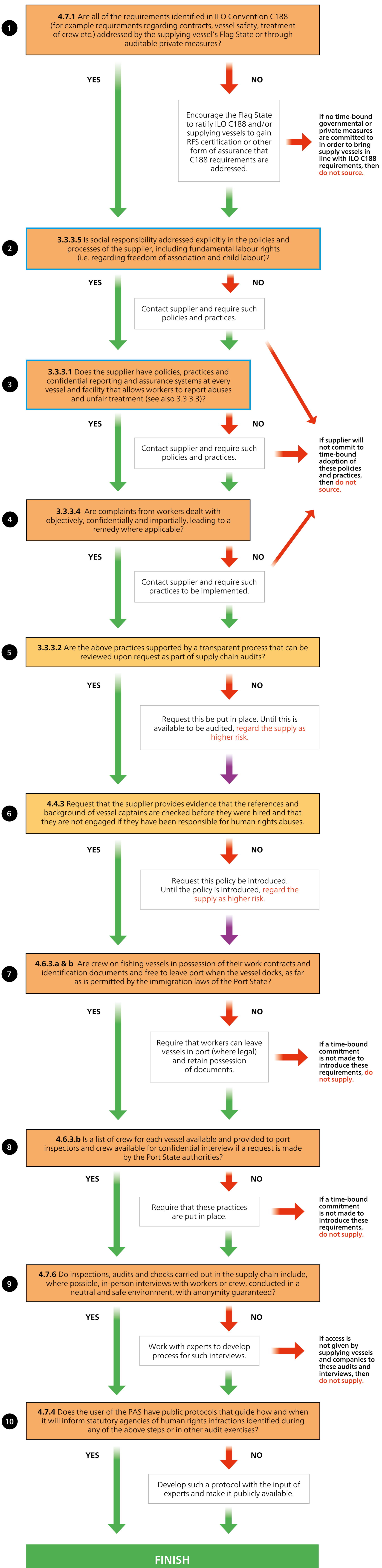
**Don't know answer:** If you don't know the answer to a question, you should launch a formal investigation or seek expert help to answer it if possible.

## Legend

[Back to Contents Page](#)

- Risk assessment consideration
- Required
- Aligns with GDST  
(KDEs collected in line with the GDST standard will assist with the step in the flow diagrams).
- Condition satisfied. Proceed.
- Condition not satisfied. Action required.
- Proceed in line with risk assessment

Page 8





# Further Information

[Back to Contents Page](#)

These materials were produced by the PAS 1550 Working Group formed of the Environmental Justice Foundation (EJF), The Pew Charitable Trusts, and the World Wide Fund for Nature (WWF-UK). They were developed with input from the Seafood Ethics Action (SEA) Alliance.

**EJF:** Max Schmid

**The Pew Charitable Trusts:** Kristine Beran

**3 Pillars Seafood:** Huw Thomas

**WWF-UK:** Hayley Swanlund

## We would like to thank the following for their input in the development of these materials:

Andy Hickman, Tesco and SEA Alliance Chair

Alex Caveen, RS Standards Limited

Clarus Chu, WWF

David Verano Cañaveras, AENOR

Dawn Borg Costanzi, The Pew Charitable Trusts

Denise Antonella Florez, AENOR

Georg Werner, EJF

Janelle Hangan, The Pew Charitable Trusts

Karen Green, Seafish

Karim Ben Romdhane, WWF

Lucy Blow, on behalf of New England Seafood International

Mike Mitchell, Fair Seas Limited

Mike Platt, Global Seafood Assurances

Nikolas Evangelides, The Pew Charitable Trusts

SEA Alliance members

**Edited by:** Nicki Holmyard

**Designed by:** James Llewellyn-Smith, Clean Canvas Ltd.



**SEAFOOD ETHICS  
ACTION ALLIANCE**

This publication has been produced with the financial contribution of the European Union. Its contents are the sole responsibility of WWF and EJF and do not necessarily reflect the views of the EU.